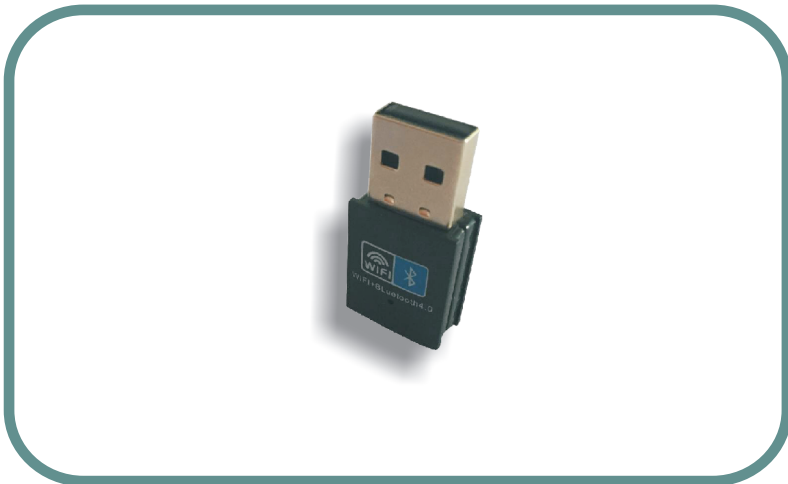


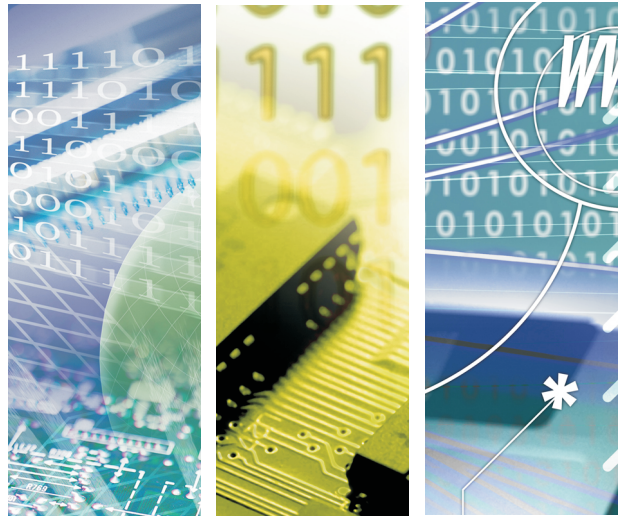


DUB812R

IEEE 802.11b/g/n WiFi + BT4.0 USB dongle



802.11b/g/n with Bluetooth 4.0 Combo 1T1R USB Dongle(XH)



DUB812R

Introduction of Products

Bointec DUB812R USB adapter is a highly integrate solution to 802.11b/g/n with Bluetooth 2.1 / 3.0 / 4.0 and with small size. It provides good coordination and superb coexistence performance between 802.11 and Bluetooth.

Product Highlight

WiFi Features

- Comply with IEEE 802.11b/g/n standards.
- High transfer data rate – 1T1R, up to 150Mbps.
- Supports 64/128-bit WEP, WPA, WPA2 and IEEE802.1x functions for enterprise level of security.
- Support the most popular operating system: Windows 7 / 8 / 10, Linux
- Supports USB 2.0/1.1 interface.
- Supports software WPS (WiFi Protected Setup) connection.
- Supports WMM wireless QoS feature.

Bluetooth Features

- Bluetooth Class 1 radio.
- Supports Bluetooth v4.0 Low Energy (BLE).
- Bluetooth v4.0 Dual Mode support : Simultaneous LE and BR/EDR.
- Compatible with Bluetooth v1.1, v1.2, v2.1 and v3.0. • Bluetooth v3.0 +HS compliant.
- Supports AFH (Adaptive Frequency Hopping) to dynamically detect channel quality to improve transmission quality.
- Supports 4 Pico nets in a scatter net.
- Supports Secure Simple Pairing.
- Supports Low Power Mode (Sniff / Sniff Sub rating / Hold / Park).
- Enhanced BT/WiFi Coexistence control to improve transmission quality in different profiles.



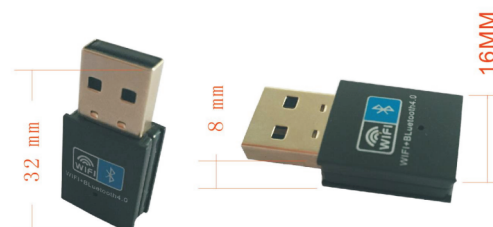
Specification

Product	11n Wireless LAN with Bluetooth USB Adapter
Chipset Solution	Realtek RTL8723BU
Standard	WiFi: IEEE 802.11b/g/n BT: Class 1 radio, supports BT v4.0/ 3.0/ 2.1/ 1.2/ 1.1
Bus Type	USB 1.1/2.0 Type A (WiFi and BT)
Frequency Band	2.400~2.4835GHz (Industrial Scientific Medical Band)
Modulation	WiFi: 802.11b: CCK(11.5Mbps), QPSK(2Mbps), BPSK(1Mbps), 802.11 g/n: OFDM BT: 8DPSK, Pi/4 DQPSK, GFSK
Data Rate	WiFi: 11b: 1/2/5.5/11Mbps 11g: 6/9/12/18/24/36/48/54Mbps 11n (20MHz): MCS0-7, up to 72Mbps 11n (40MHz): MCS0-7, up to 150Mbps BT: Basic rate: 1Mbps Enhanced rate: 2/3 Mbps High Speed: 6/9/12/18/24/36/48/54 Mbps
Output Power	WiFi: 11b: 16±1.5dBm , 11g: 14±1.5dBm, 11n: 12±1.5dBm BT: Max +10dBm
Receive Sensitivity	WiFi: 11b@11Mbps: -87dBm± 2dBm 11g@54Mbps: -65dBm± 2dBm 11n@108Mbps: -65dBm± 2dBm 11n@130Mbps: -65dBm± 2dBm BT: -89dBm@ 1Mbps -90dBm@ 2Mbps -83dBm@ 3Mbps
Operating Channel	WiFi 2.4GHz: 11: (Ch 1-11) – United States 13: (Ch 1-13) – Europe 14: (Ch 1-14) – Japan BT 2.4GHz: Ch 0-78
Media Access Control	WiFi: CSMA/CA with ACK BT: AFH, Time Division
Network Architecture	WiFi: Ad-hoc mode(Peer-to-Peer) Infrastructure mode Software AP WiFi Direct BT: Pico Net Scatter Net
Security	WiFi: WEP 64/128, WPA, WPA2 and IEEE 802.1x BT: Simple Pairing
Antenna	Internal Antenna x 1 (1T1R)
Drivers	Windows 7 / 8 / 10, Linux
Dimension	8.0(H) x 16.0(W) x 32.0(D) mm
Temperature	Operating: -20~45°C , Storage: -40~70°C
Humidity	Operating: 10~90% (NonCondensing), Storage: 5~90% (NonCondensing)

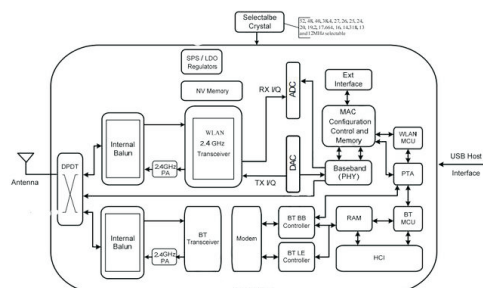
Product quick glance



ME Drawing/placement



Block Diagram



Ordering Information

PART NUMBER	DESCRIPTION
TFGA-DUB812R0-31	Finished non packing, DUB812R

Bointec Authorized Distributer



We are Your Partner more than Business



TAIJET BOINTEC CO LTD
4F, #114, ZHOULI ST., NEIHU-TAIPEI 11493, TAIWAN
TEL: +886-2-2759-0081 EMAIL: contact@bointec.com
WWW.BOINTEC.COM

(C)BOINTEC. All rights reserved. Bointec & the Bointec logo are the trademarks of Taijet Bointec, which may be registered in some jurisdictions. All other brands and product names are registered trademarks of their respective holders. Information supplied by Bointec is believed to be accurate and reliable. Bointec assumes no responsibility for any errors in this brochure. Bointec reserves the right, without notice, to make changed in product design or specifications.