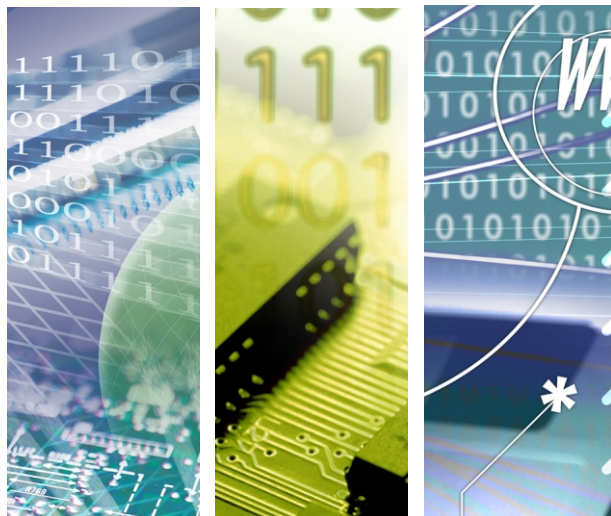




# DPE808AA

## 802.11b/g/n WiFi with BT4.0 Combo miniPCIe Card



DPE808AA

*Cost-Effective Radio Solution of WiFi and Bluetooth.*

### Introduction of Products

Taijet Bointec DPE808-AA is the combo solutions of WLAN 802.11 b/g/n and Bluetooth 4.0 solutions. DPE808-AA truly provide great advantages such as cost effective solutions, the lower power consumption, small size based on the half miniPCIe card, the wide temperature tolerance and several significant EMC certificates according to different areas. Therefore, customers can use these benefits in order to add or create more value on their current and future product line. Regarding the communication, DPE808AA support IEEE 802.11 b/g/n so as to achieve the max throughput 150Mbps or 300Mbps based on optional 2T2R scheme. Besides, it can achieve Bluetooth 4.0 standard with single mode feature.

Considering the applications, Taijet Bointec DPE08AA can truly fulfill the current markets such as industrial field, automobile and commercial field. Especially, it can meet requirement of the IPC, semi-rugged or consumer products due to the great tolerance of temperature. Additionally, Taijet Bointec can provide the full support of DPE808AA including the hardware and software. Thus, it is definitely easy for all our clients to deploy and use the DPE808AA according to our quick guide.

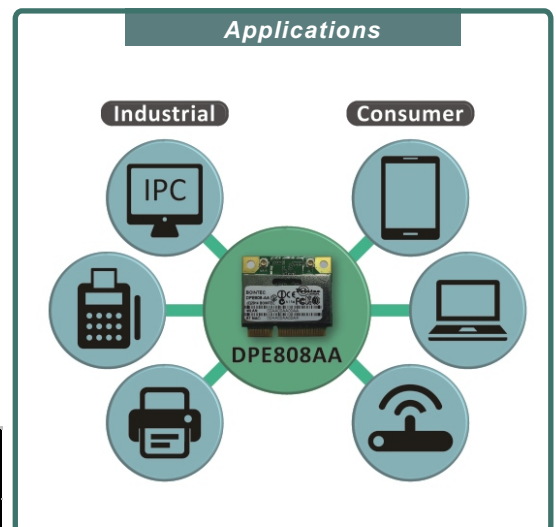
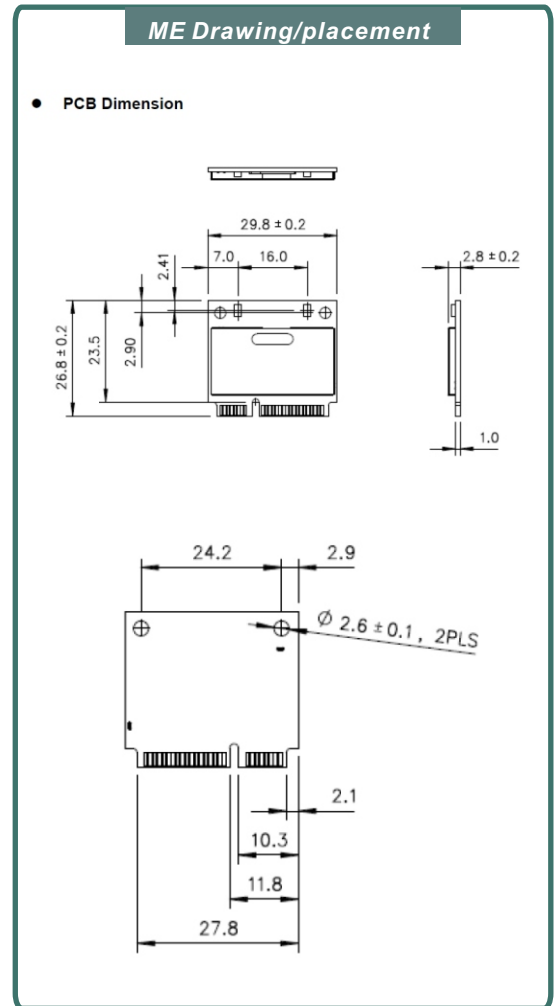
### Product Highlight

- IEEE802.11 b/g/n compliant 2.4GHz.
- Bluetooth 4.0
- miniPCI Express half card based Mini-1.1 compliant
- Cost-Effective Solution
- Low Power Consumption
- Wide Temperature Tolerance
- Support Windows 2K, XP or Vista (TBD)
- RoHS compliant
- Several EMC Certificates according to different areas



## Specification:

Feature	Specification	Notes								
<b>Interface</b>										
Interfaces	PCI Express® Mini Card Electromechanical Specification Revision 1.2									
<b>WiFi</b>										
Standard	IEEE 802.11 b/g/n									
Frequency Range	<ul style="list-style-type: none"> <li>● USA: 2.400 ~ 2.483GHz</li> <li>● Europe: 2.400 ~ 2.483GHz</li> <li>● Japan: 2.400 ~ 2.497GHz</li> <li>● China: 2.400 ~ 2.483GHz</li> </ul>									
Bandwidth	HT20 and HT40									
WiFi Alliance	WECA Compliant									
Antenna	One IPEX connector (1T1R) Option: Two IPEX connectors (2T2R)	U.FL-R-SMT								
Security	64-bit, 128-bit, 152-bit WEP Encryption 802.1x Authentication AES-CCM and TKIP Encryption									
<b>Bluetooth 4.0 (Low Energy)</b>										
Compliance	Bluetooth v4.0									
Frequency Range	2400~2483.5 MHz									
Sensitivity	-85 dBm (typ.) for pi/4-DQPSK, 0.1%BER									
<b>Dimension</b>										
PCB Dimension	26.65+/-0.15mm x 29.85+/-0.15mm x 1.0+/-0.1mm 2L FR4									
<b>Power and Consumption</b>										
Operation Voltage	3.3V +/- 9%									
WiFi Power Consumption@ 25 °C	<table border="0"> <tr> <td></td> <td>802.11n (2.4GHz)</td> </tr> <tr> <td></td> <td>Avg/Max (mA)</td> </tr> <tr> <td>● FTP Tx</td> <td>266/ 410</td> </tr> <tr> <td>● AP scanning, no association with AP</td> <td>204/ 408</td> </tr> </table> <p>◆ The maximum current consumption would be impacted by radiation environment and the driver mechanism</p>		802.11n (2.4GHz)		Avg/Max (mA)	● FTP Tx	266/ 410	● AP scanning, no association with AP	204/ 408	
	802.11n (2.4GHz)									
	Avg/Max (mA)									
● FTP Tx	266/ 410									
● AP scanning, no association with AP	204/ 408									
Bluetooth Power Consumption@ 25 °C	<table border="0"> <tr> <td></td> <td>Avg (mA)</td> </tr> <tr> <td>● Idle mode</td> <td>15.1</td> </tr> <tr> <td>● Continuous DH5 TX</td> <td>68.8</td> </tr> </table> <p>◆ The maximum current consumption would be impacted by radiation environment and the driver mechanism.</p>		Avg (mA)	● Idle mode	15.1	● Continuous DH5 TX	68.8			
	Avg (mA)									
● Idle mode	15.1									
● Continuous DH5 TX	68.8									
<b>Operational Temperature</b>										
Operation Temperature	0~60 °C									
Storage Temperature	-20~80 °C									
<b>Certificate</b>										
FCC	FCC part 15 (USA)									
IC	RSS210 (Canada)									
TELEC	TELEC (Japan)									
ETSI	EN301893 and EN60950 (Europe)									
VCCI	VCCI Class B									



## Order Information:

Tajet Bointec DPE808AA	Description
DPE808AA DK Package	1. One DPE808AA Entity 2. Two 2.4GHz External Antenna 3. Two antenna cable 4. CD(including user specification and driver)
DPE808AA Entity	One DPE808AA Entity



TAJET BOINTEC CO LTD  
4F, # 114, Zhouzi St., Neihu-Taipei 11493, Taiwan  
TEL: +886-2-2759-0081  
WWW.BOINTEC.COM

Bointec Authorized Distributer