



# CUB805R

IEEE 802.11b/g/n Wi-Fi-USB industrial module



*The cost effective industrial wireless LAN solution*

## Introduction of Products

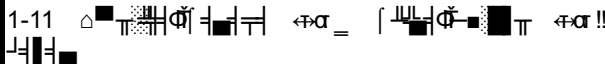

Bointec CUB805R is a wifi USB 2.0 module, comply with FCC CE, is 150 wireless USB adapter which has lower power consumption, high linearity output power, accords with IEEE802.11B/G/N, and supports IEEE802.11i safety protocol, along with IEEE 802.11e standard service quality. It connects with other wireless device which accorded with these standards together, supports the new data encryption on 64/128 bit WEP and safety mechanism on WPA-PSK/WPA2-PSK, WPA/WPA2. Its wireless transmitting rate rises 150M, equivalent to 10 times of common 11b product.

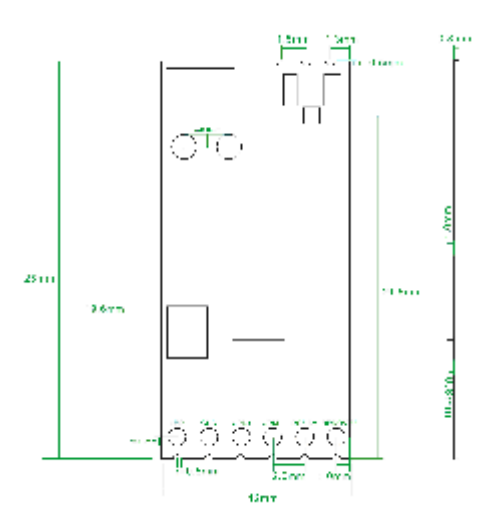
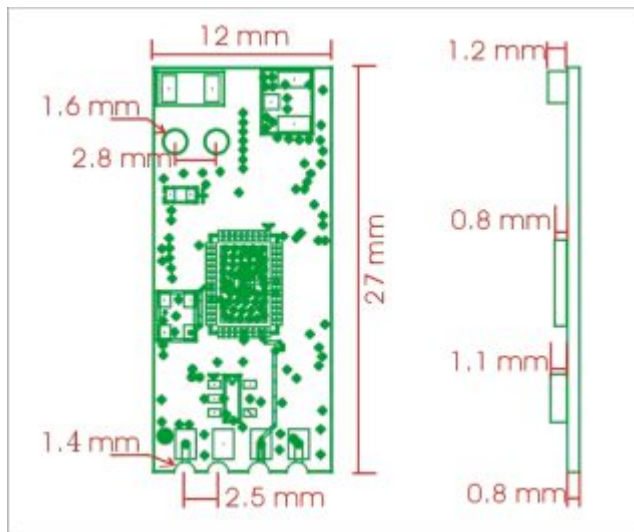
It's easy and convenient to link to wireless network for the users using desktop, laptop and other device that needs connect to wireless network.

Bointec CUB805R is good for apply on MID, networking camera, STB GPS, E-book, Hard disk player, Network Radios, PSP, etc, the device which need be supported by wireless

## Product Highlight

- CMOS MAC, Baseband PHY, and RF in a single chip for IEEE 802.11b/g/n compatible WLAN
- Complete 802.11n solution for 2.4GHz band
- 72.2Mbps receive PHY rate and 72.2Mbps transmit PHY rate using 20MHz bandwidth
- 150Mbps receive PHY rate and 150Mbps transmit PHY rate using 40MHz bandwidth
- Compatible with 802.11n specification
- Backward compatible with 802.11b/g devices while operating in 802.11n mode

Specification	
The supported protocol and standard	IEEE 802.11n, IEEE 802.11g, IEEE 802.11b
Interface type	USB2.0
frequency	2.4-2.484GHZ
The amount of working Channel	1-11 
Data Modulation	OFDM/DBPSK/DQPSK/CCK
Working Mode	Infrastructure, Ad-Hoc
The transmitting rate	135/54/48/36/24/18/12/9/6 /1M 
Spread spectrum	DSSS
Sensitivity @PER	54/135M:-74dBm@10%PER, 11M:-85dBm@8%PER 6M: -88dBm@10%PER , 1M: -90dBm@8%PER
RF Power	135M: 15dBm, 54M: 15dBm, 11M: 19dBm
Throughput	90Mbps(external 2dbi antenna ,damping 40dbm in Shielding box )
The connect type of Antenna	Connect to the ANT pin of Module
LED indicator	status indicator
The transmit distance	Indoor 100M, Outdoor 300M, according the local environment
Working Power consumption	480MW
MENS(L*W*H)	12MM*25MM*0.8MM
The chipset model	RTL8188CUS



BOINTEC TAIWAN CO LTD  
 1F, #3, A20, L790, SEC. 5, CHUNGHSIAO E. RD., TAIPEI 110, TAIWAN  
 TEL: +886-2-2759-0081 FAX: +886-2-2759-1659  
 WWW.BOINTEC.COM

(C)BOINTEC. All rights reserved. Bointec & the Bointec logo are the trademarks of Bointec, which may be registered in some jurisdictions. All other brands and product names are registered trademarks of their respective holders. Information supplied by Bointec is believed to be accurate and reliable. Bointec assumes no responsibility for any errors in this brochure. Bointec reserves the right, without notice, to make changes in product design or specifications. www.bointeci.com

BOINTEC\_CUB805K\_bgn\_USB\_module\_v0.2