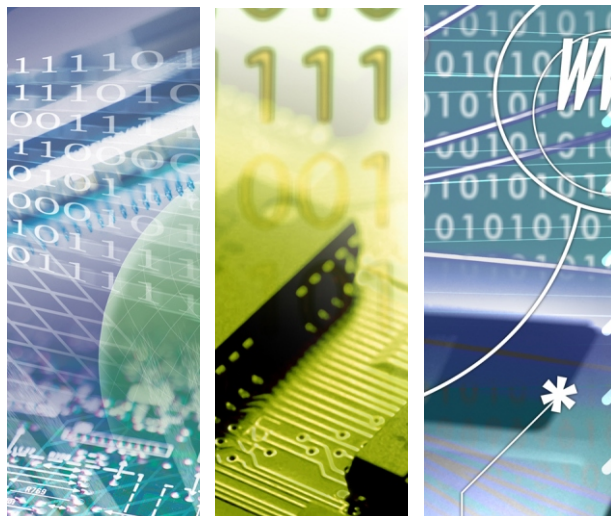




CUB111R

Wifi 802.11abgn/AC USB Dongle (External Antenna)



CUB111R

IEEE802.11abgn/AC, 1T1R USB2.0 dongle with plastic enclosure

Introduction of Products

Bointec CUB111R is a 802.11AC USB Wireless adapter using a Realtek 8811AU chipset providing a maximum transfer rate of 600Mbps. This product can be used for computer, PSP, media player or other device which needs the flexibility of a wireless connection.

With an external Antenna, it is easy for user to adjust a best angle for wireless radio signal reception/transmission.

Bointec CUB111R can be configured as an AP during installation, allowing you to share the internet connection to other Wi-Fi device. With the included AUTO-RUN CD, even novice user can install Bointec CUB111R easily and quickly.

Product Highlight

- Main Chipset : Realtek 8811CU*
- Wifi 802.11ac standard
 - *802.11 a/b/g/n products
- 3dBi internal Antennas providing even better wireless performance
- Ultra-fast AC600 (433+150Mbps) wireless speed with 802.11ac (Maximum speed up to 5GHz 433Mbps or 2.4GHz 150Mbps)
- Dual Band connections for lag-free HD video streaming and gaming
- Supports O.S.:
 - .Windows 10/8/7/XP 32/64bit
 - .Apple MAC OS,
 - .Linux
- External Antenna edition for radio

*Production Serial Code Before 2019/11/1, the Main Chipset used AU edition



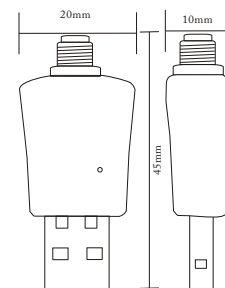
Specification

WiFi	
Standard	IEEE802.11ac, IEEE802.11a, IEEE802.11b, IEEE 802.11g, IEEE 802.11n
Bus Interface	USB 2.0
Main Chip	Realtek RTL8811AU/CU
Data Rate	802.11a: 54, 48, 36, 24, 18, 12, 9, 6 Mbps 802.11b: 11, 5.5, 2, 1 Mbps 802.11g: 54, 48, 36, 24, 18, 12, 9, 6 Mbps 802.11n: MCS 0 to 15 for HT20MHz, MCS 0 to 15 for HT40MHz, 802.11ac: MCS 0 to 8 for HT20MHz MCS 0 to 9 for HT40MHz MCS 0 to 9 for HT80MHz
Media Access Control	CSMA/CA with ACK
Modulation Techniques	802.11ac: 256QAM, 64QAM, 16QAM, QPSK, BPSK 802.11a: 64QAM, 16QAM, QPSK, BPSK 802.11b: CCK, DQPSK, DBPSK 802.11g: 64QAM, 16QAM, QPSK, BPSK 802.11n: BPSK, QPSK, 16QAM, 64QAM
RF Output Power	2.4GHz: 802.11b : 18 dBm±1.5dB 2.4GHz: 802.11n : 14 dBm±1.5dB 5GHz: 802.11a : 12 dBm±1.5dB 5GHz: 802.11ac : 12 dBm±1.5dB (for detail, check specification document)
RF Sensitivity	11a,20MHz:- MCS=0 PER @ -90 dBm, typical 11n,20MHz:- MCS=0 PER @ -90 dBm, typical 11b,20MHz@8%PER:- 11Mbps PER @ -91 dBm, typical (for detail, check specification document)
Network Architecture	Ad-hoc mode (Peer-to-Peer) Infrastructure mode
Security	WEP 64&128bit, WPA, WPA-PSK, WPA2, WPA2-PSK, WPS, IEEE 802.1X, IEEE 802.11i
Driver support	
OS Supported	Windows XP (32/64) ; Vista (32/64) ; Windows 7 (32/64) ; Windows 8 (32/64) ; Windows 8.1 (32/64) ; Windows 10 (32/64) ; Linux2.6 or above version ; Mac10.11 or lower version.
Electronics characteristics	
Operating Voltage	5V/1A ±5% I/O supply voltage
Dimansion	55.00mm x 15.00mm x 4.00mm(PCB-A)
Antenna Type	wire-out or U.FL connectors x 2
Operating Temperature	-0° ~ +50°C
Storage Temperature	-20° ~ +70°C
Operating Humidity	5%~95%, non-condensing
Storage Humidity	5%~95%, non-condensing
Certifications	
CE (Eurpoe)	Yes
RoHS	Yes

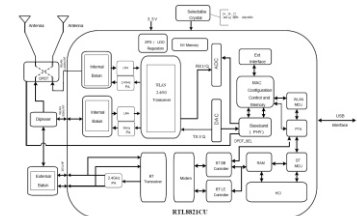
Product quick glance



ME Drawing/placement



Block Diagram



Ordering Information

PART NUMBER	DESCRIPTION
TFGA-CUB111R1-31	finished non packing, OEM,CUB111R
TWRN-9161201-102	2.4GHz+5.8GHz wifi antenna, dual bands SMA MF, simple
TWRN-2461201-001	2.4GHz wifi antenna, SMA MF, simple

Bointec Authorized Distributer



TAIJET BOINTEC CO LTD
196-7, Sec.3 Da-Tong Rd., Xizhi, New Taipei City, 22103, Taiwan
TEL: +886-2-2759-0081 EMAIL: contact@bointec.com
WWW.BOINTEC.COM

(C)BOINTEC. All rights reserved. Bointec & the Bointec logo are the trademarks of Taijet Bointec, which may be registered in some jurisdictions. All other brands and product names are registered trademarks of their respective holders. Information supplied by Bointec is believed to be accurate and reliable. Bointec assumes no responsibility for any errors in this brochure. Bointec reserves the right, without notice, to make changed in product design or specifications.

We are Your Partner more than Business