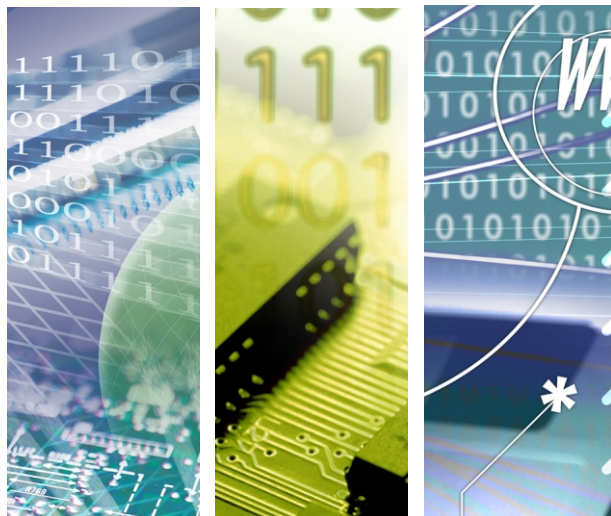




# CPE101A

IEEE 802.11a/an/ac 2T2R Full Size miniPCle Module



CPE101A

High Throughput 11ac miniPCle Solutions.

## Introduction of Products

Taijet Bointec CPE101A is a WLAN module supporting IEEE 802.11 a/an/ac standard via the miniPCe full size card.

The CPE101A is a highly integrated wireless local area network (WLAN) system-on-chip (SoC) for 5GHz applications. It enables high-performance 2x2 MIMO with two spatial streams for wireless demanding the highest robust link quality, maximum throughput and range such as Home Entertainment, Health Care, Monitor System or Industry and Enterprise applications. Thus, the CPE101A will be a perfect solution to meet these advanced conditions.

CPE101A is truly a cost-effective solution for the current wireless market with the powerful performance. Besides, it possesses 2X2 MIMO technology (2T2R). It can achieve the max throughput of 866Mbps based on its comprehensive modulation technique and supporting HT80. It is convenient for all users to use miniPCle interface in order to assemble on customer's host board or custom boards. Based on the standard size module and robust setup scheme, CPE101A provides those advantages to enhance the value of our customer's target product.

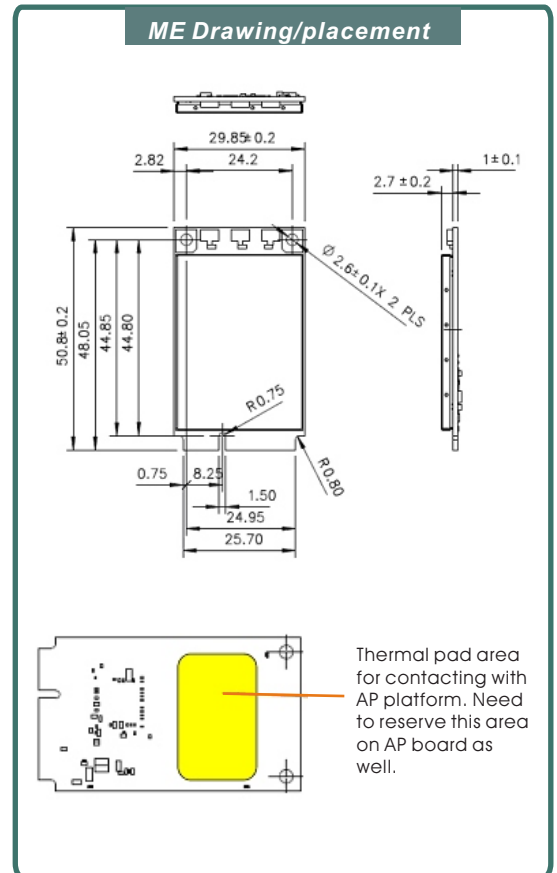
## Product Highlight

- Main Chip Qualcomm Atheros QCA9882
- IEEE 802.11 a/an/ac based on 5GHz frequency band
- 2x2 MIMO Technology (2T2R)
- Support 20MHz, 40MHz and 80MHz Bandwidth
- Support 256QAM Modulation
- Max throughput 866Mbps
- 30 X 50.8 mm size with the same mounting hole location as the standard full mini card
- 2 SMT Ultra-miniature coaxial connectors (U.FL type)
- Operation Voltage: 3.3V
- Operating temperature: -10~60 degrees C
- RoHS compliance



Specification:

Feature	Specification
<b>General</b>	
Radio	IEEE 802.11 a/n/ac
Frequency Range	5GHz
Bandwidth	HT20, HT40, HT80
Host Interface	PCI Express® Mini Card Electromechanical Specification Revision 1.2
Antenna	<ul style="list-style-type: none"> <li>• 2 x SMT Ultra-miniature coaxial connectors (U.FL)</li> <li>• 2T2R (2x2 with 1NSS/2NSS MCS 0-9)</li> </ul>
<b>Dimensions</b>	
PCB Dimension	(50.8+/-0.2mm)x(29.85+/-0.2mm)x(1.0+/-0.1mm) with 4 PCB layers
<b>Temperature</b>	
Operation Dimension	-10 °C ~ 60 °C (with thermal pad underneath assembled, see definition in mechanical drawing)
Storage Dimension	-20 °C ~ 80 °C
<b>Power Consumption</b>	
Power	3.3V +/- 5%.
<b>Certificate</b>	
RoHS	



Order Information:

Taijete Bointec CPE101A	Description
CPE101A DK Package	1. One CPE101A Entity 2. TBD
CPE101A Entity	One CPE101A Entity



TAIJET BOINTEC CO LTD  
4F, # 114, Zhouzi St., Neihu-Taipei 11493, Taiwan  
TEL: +886-2-2759-0081  
WWW.BOINTEC.COM

Bointec Authorized Distributer

(C)TAIJET BOINTEC. All rights reserved. Taijete Bointec & the Taijete Bointec logo are the trademarks of Taijete Bointec, which may be registered in some jurisdictions. All other brands and product names are registered trademarks of their respective holders. Information supplied by Taijete Bointec is believed to be accurate and reliable. Taijete Bointec assumes no responsibility for any errors in this brochure. Taijete Bointec reserves the right, without notice, to make changed in product design or specifications.