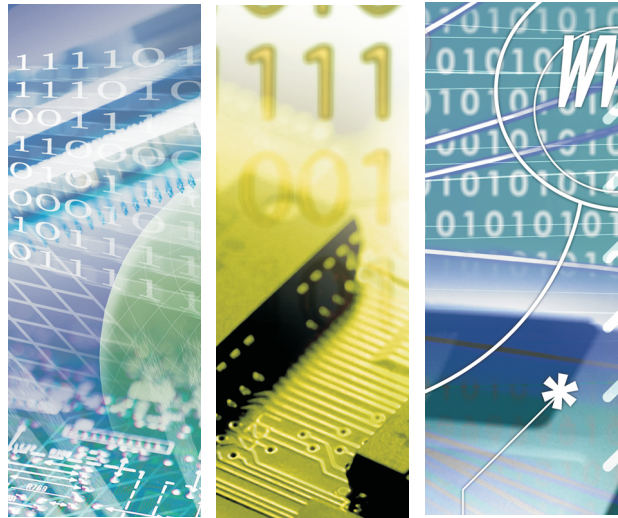




# CSW968A

WiFi 802.11 a/b/g/n IoE Module



CSW968A

*State-of-the-art Solution of IoE Applications.*

## Introduction of Products

Taijet Bointec CSW968A WiFi module provides a highly-integrated and flexible platform for developing and evaluating products and applications based on the QCA4004 SoC. The CSW968A module can be either used with the development kit for software development or incorporated into OEM products to enable rapid deployment of WiFi connected systems. The CSW968A module includes the following components:

- QCA4004 chip
- Trace antenna and U.FL connectors to support 2.4/5 GHz operation with antenna diversity
- RF matching circuits
- Components required to run a Wi-Fi channel

The QCA4004 is a single chip 1x1 802.11 a/b/g/n device optimized for low-power embedded applications with single-stream capability for both Tx and Rx. It has an integrated network processor with a large set of TCP/IP with IPv4/IPv6-based services. These services can be accessed via a serial SPI link or by a UART link connected to an external host CPU.

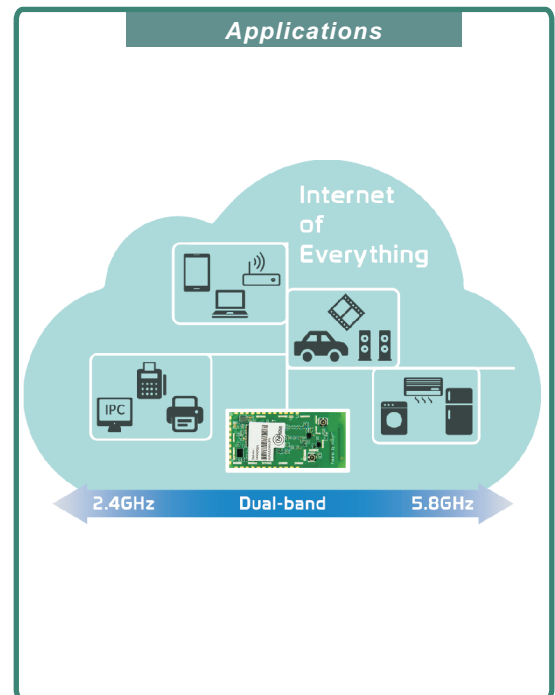
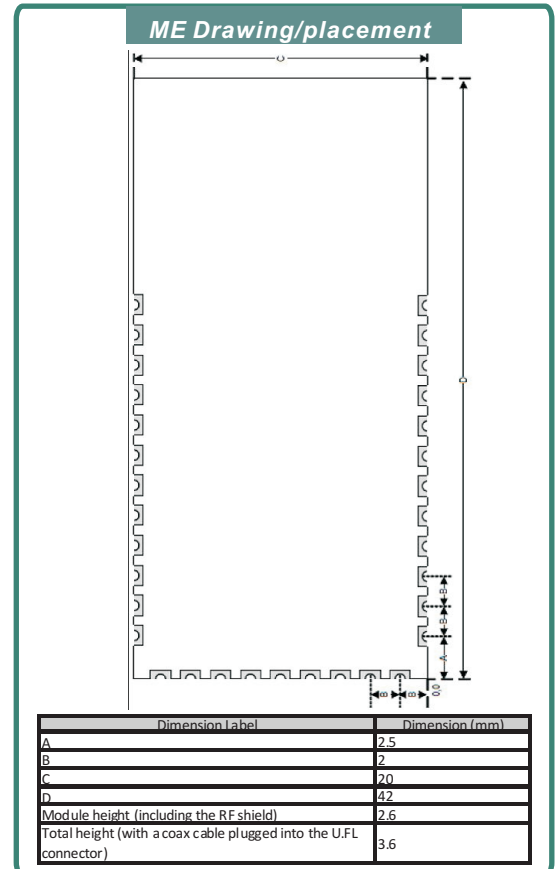
## Product Highlight

- Main Chipset Qualcomm® QCA4004
- Powered by AllJoyn
- IEEE 802.11 a/b/g/n compliant with 2.4GHz and 5GHz dual band frequency
- Supporting HT20/HT40 bandwidth
- 1T1R, Single stream; Support antenna diversity
- Integrated PA and LNA; Support for external PA and external LNA
- 802.11a: 6, 9, 12, 24, 36, 48, 54Mbps; 802.11b: 1, 2, 5.5, 11Mbps; 802.11g: 6, 9, 12, 24, 36, 48, 54Mbps; 802.11n: Support PHY rate up to 150Mbps.
- Low power listen mode
- UART/USB/SPI/I<sup>2</sup>C/GPIO interface
- External antenna via IPEX connectors
- Pre- certified FCC



Specification:

Feature	Specification
<b>General</b>	
Processor	Qualcomm® QCA4004
Frequency band	Dual-Band of 2.4GHz and 5GHz
Bandwidth	HT20 and HT40
Antenna	<ul style="list-style-type: none"> <li>External antenna via IPEX connector (Optional)</li> <li>1T1R</li> </ul>
Interfaces	<ul style="list-style-type: none"> <li>UART</li> <li>USB</li> <li>SPI/SDIO</li> <li>GPIOs,</li> <li>I<sup>2</sup>C</li> <li>I<sup>2</sup>S</li> </ul>
<b>WiFi</b>	
Standard	IEEE 802.11 a/b/g/n
Internet Protocols	IPv4/IPv6, TCP/UDP, ARP/NDP, DHCPv4, ICMPv6
Security Protocols	WPS, WPA, WPA2, WEP, TKIP
<b>Power Consumption</b>	
Operating Voltage	3.3 V ± 10%
Power Consumption	<ul style="list-style-type: none"> <li>Transmit: 250 mA @16dBm</li> <li>Receive: 75 mA (typical)</li> <li>Power saving mode(DITM=1): 1.09mA</li> <li>Standby mode(Sleep): 130uA</li> </ul>
<b>Environment</b>	
Operating Temperature	<ul style="list-style-type: none"> <li>Industrial: -40°C ~ +85°C</li> <li>Commercial: -10°C ~ +65°C</li> </ul>
Operating Humidity	Operating humidity: 20-70%
<b>Dimension</b>	
PCB Size	42 x 20 x 2.5 mm (height is 3.6mm when a coax cable is plugged into the u.FL connector)
<b>Certificate</b>	
<ul style="list-style-type: none"> <li>Pre-certified FCC</li> <li>RoHS compliant</li> </ul>	



Bointec Authorized Distributer



TAIJET BOINTEC CO LTD  
 4F, #114, Zhouzi St., Neihu-Taipei 11493, Taiwan  
 TEL: +886-2-2759-0081  
 WWW.BOINTEC.COM

(C)TAIJET BOINTEC. All rights reserved. TAJET Bointec & the TAJET Bointec logo are the trademarks of TAJET Bointec, which may be registered in some jurisdictions. All other brands and product names are registered trademarks of their respective holders. Information supplied by TAJET Bointec is believed to be accurate and reliable. TAJET Bointec assumes no responsibility for any errors in this brochure. TAJET Bointec reserves the right, without notice, to make changes in product design or specifications.